

CHEVRON ONE RESIDENCES

GOLD COAST

PROJECT OVERVIEW

BROUGHT TO YOU BY

Ê
Bensons



CHEVRON ONE RESIDENCES

GOLD COAST

PERFECTLY POSITIONED
AS A CALM OASIS, SET BACK
FROM THE LIVELINESS OF
SURFERS PARADISE, WHICH IS
ONLY A SHORT STROLL AWAY.

SURFERS PARADISE
BEACH

CHEVRON
ISLAND

CHEVRON ISLAND
RETAIL VILLAGE

BROADBEACH

CONVENTION AND
EXHIBITION CENTRE

NEW \$2B STAR CASINO
AND RESORT

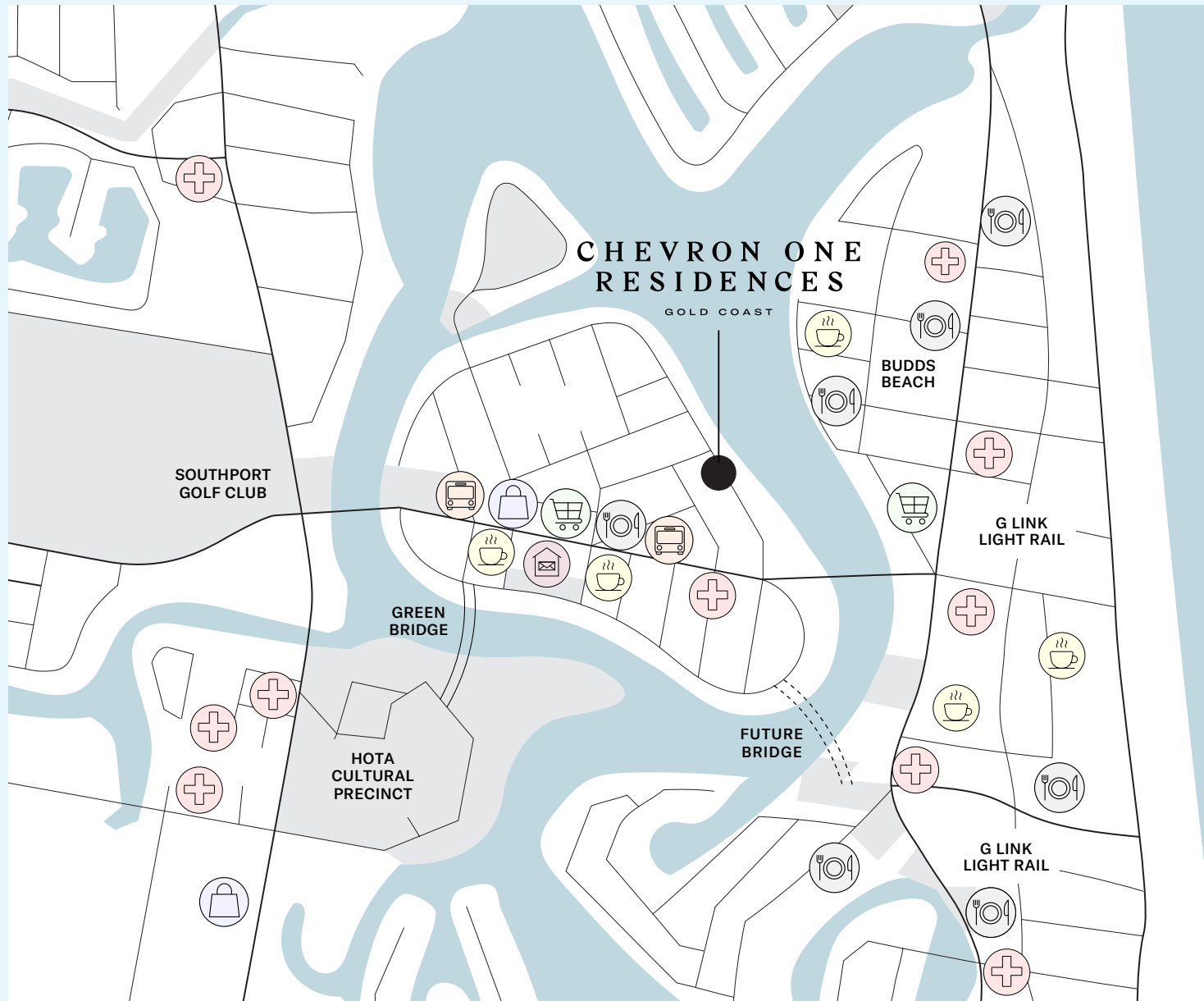
\$670M REDEVELOPED
PACIFIC FAIR SHOPPING
CENTRE

\$385M GOLD COAST HOTA
CULTURAL PRECINCT

NERANG
RIVER



A CONNECTED VILLAGE



CHEVRON ISLAND VILLAGE



MEDICAL



CAFÉ



HAIR SALON



GROCERY



BUS STOPS



POST OFFICE



DINING



RETAIL



PHARMACY

A CONNECTED LIFESTYLE

WALK SCORE

Chevron One Residences achieves an enviable Walk Score of 89/100. This location is defined as 'Very Walkable' so most errands can be accomplished on foot.

Surfers Paradise Beach is a mere four minute walk away, while the GLKN Broadbeach - Gold Coast Hospital at the Cavill Avenue stop, and nearby parks including Chevron Island Park, Korman Family Park and Austin Gilchrist Park are all within walking distance.

COMPARABLE WALK SCORES

| SOUTH YARRA MELBOURNE | CHEVRON ISLAND GOLD COAST | DOUBLE BAY SYDNEY |
|--------------------------|------------------------------|----------------------|
| 92 | 89 | 86 |
| 100 | 100 | 100 |

THE BEACH

7 minute walk, 800M

SURFERS PARADISE CBD

4 minute walk, 350M

STAR CASINO & PACIFIC FAIR

8 minute drive, 4KM

SOUTHPORT GOLF CLUB

4 minute drive, 2KM

SOUTHPORT RACECOURSE

5 minute drive, 2.7KM

GOLD COAST LIGHT RAIL

5 minute walk, 600M

THOMAS DRIVE & RETAIL SHOPS

2 minute walk, 180M

GOLD COAST HOSPITAL

12 minute drive, 5KM

HOTA CULTURAL PRECINCT

8 minute drive, 950M



CHEVRON ISLAND A HIGHLY SOUGHT AFTER ISLAND ADDRESS

Chevron Island is home to some of the Gold Coast's most exclusive addresses, with a range of multi-million dollar houses and apartments.



39 Darrambal Street
\$1.65m

62/53 Darrambal Street
\$1.225m

81 Stanhill Drive
\$8m

83 Stanhill Drive
\$4.8m+

73 Stanhill Drive
\$6.1m

69 Stanhill Drive
\$4.7m

167 Stanhill Drive
\$3.75m

25 Southern Cross Drive
\$6m

3 Southern Cross Drive
\$5.025m

18-20 Southern Cross Drive
\$11m

11 Southern Cross Drive
\$6.95m

A CULTURAL ESCAPE

1

HOTA, HOME OF THE ARTS

A vibrant arts precinct set amongst beautiful parklands, the HOTA Gallery is a must-see cultural destination.



2

HOTA OUTDOOR SPACE

The HOTA Outdoor Stage showcases events and performances that takes place year-round including outdoor concerts, festivals, theatre and comedy.



3

SUNDAY FARMERS MARKETS

Every Sunday morning the local farmers bring their just-picked produce to the bustling Bundall Farmers' Market for local residents and visitors alike.



CHEVRON ONE RESIDENCES AND HOTA PRESENT AN EXCLUSIVE PARTNERSHIP

Located a short walk from Chevron One, HOTA is the landmark part of Gold Coast's Cultural Precinct Masterplan and largest public gallery outside a capital city in Australia.

In addition to the arts and culture lifestyle afforded by the location of Chevron One Residences, future residents will receive a complimentary annual membership to HOTA providing money-can't-buy experiences such as VIP invites to special events, exclusive members only previews and access to members only offers.



"ART HAS A WAY OF ENRICHING THE LIVES OF ALL THOSE THAT TOUCH IT AND SEE IT.
OUR DEVELOPMENTS MUST INCLUDE ELEMENTS THAT ENRICH THE LIVES OF THOSE WHO LIVE IN THEM AND CHEVRON ONE RESIDENCES IS NO EXCEPTION."

Chairman of Bensons Property Group,
Elias Jreissati AM, KJGC



CHEVRON ONE RESIDENCES

GOLD COAST



AN ELEVATED LIFESTYLE

Chevron One will stand as an iconic landmark.
Minutes from Surfers Paradise and the new arts and cultural precinct,
Chevron One residents will savour a unique lifestyle experience.





ARTIST IMPRESSION

YOUR EXCLUSIVE ISLAND RESIDENCE



ARTIST IMPRESSION



ARTIST IMPRESSION



ARTIST IMPRESSION



ARTIST IMPRESSION

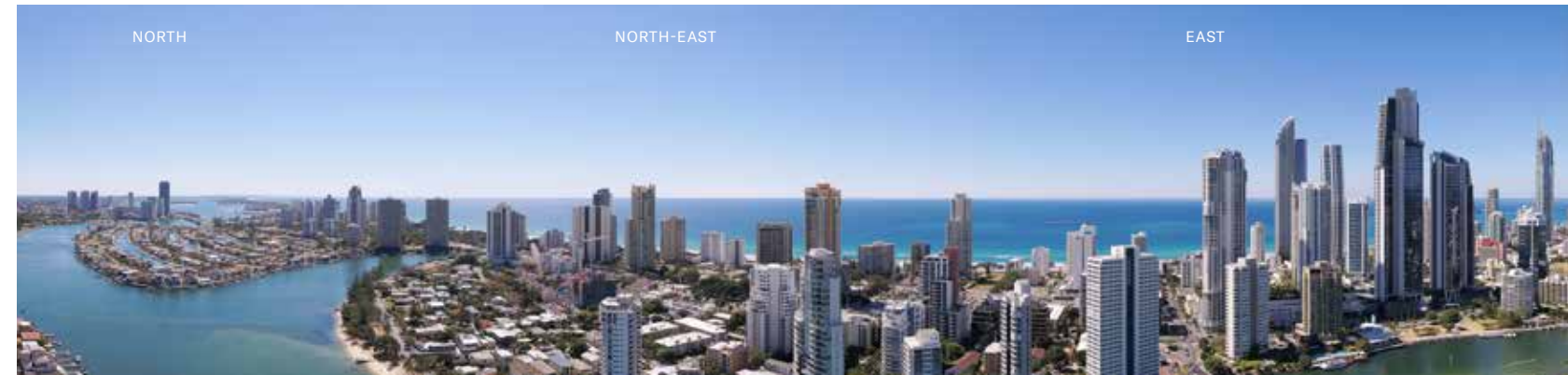
ENVIABLE PANORAMIC VIEWS



ARTIST IMPRESSION

CHEVRON ONE RESIDENCES
PROVIDES EVENING VIEWS OVER
CENTRAL SURFERS PARADISE

LEVEL 38 - INDICATIVE NORTH-EAST VIEWS



LEVEL 38 - INDICATIVE SOUTH VIEWS



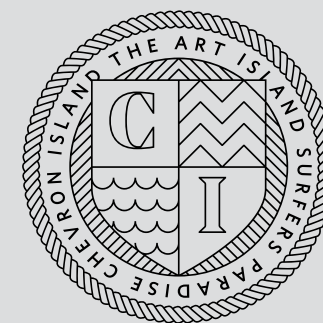
LEVEL 38 - INDICATIVE NORTH-EAST VIEW AT NIGHT



RESIDENTS WILL ALSO ENJOY
VIEWS OF THE OCEAN, RIVER
AND HINTERLANDS



ARTIST IMPRESSION



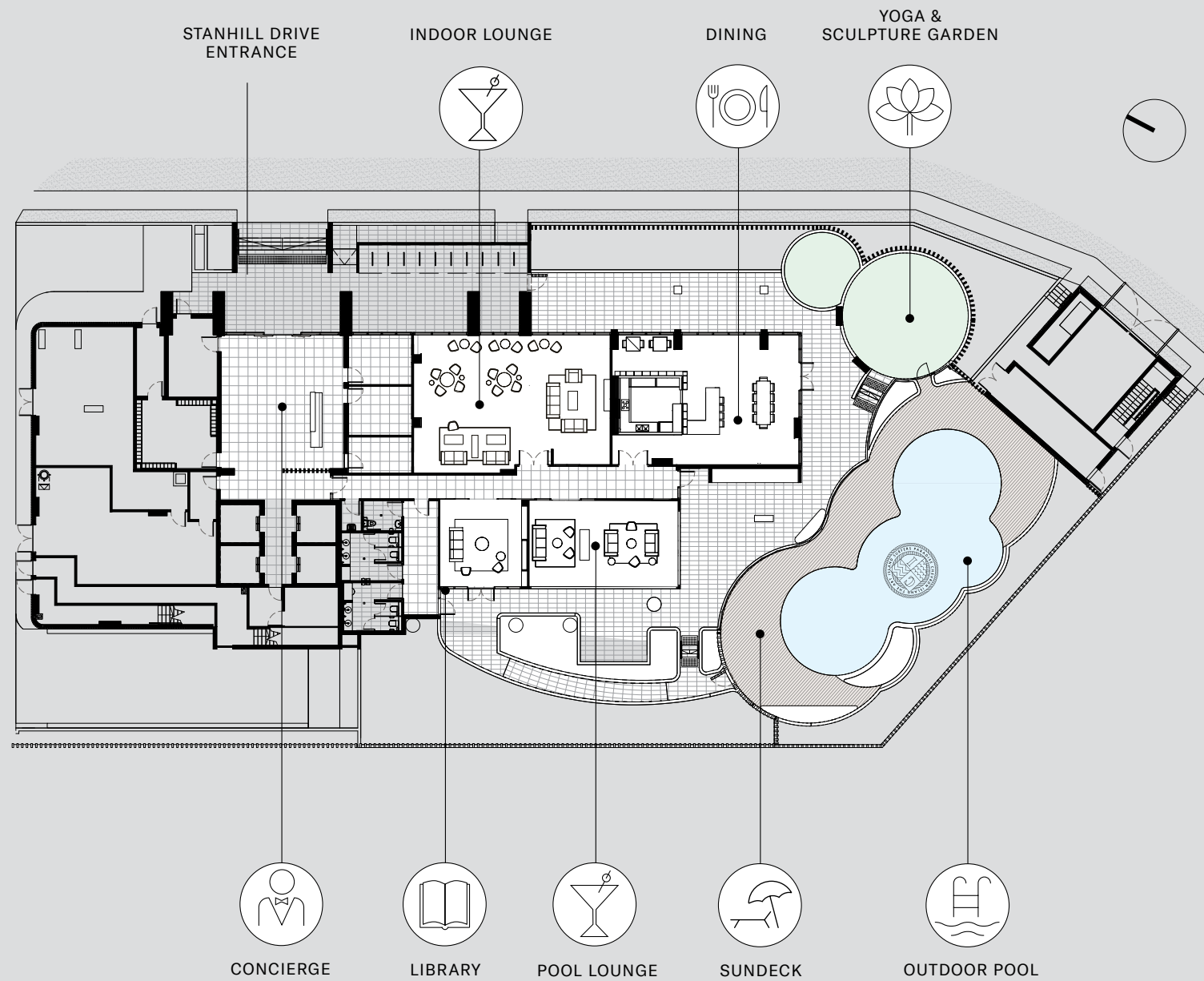
CLUB ONE

Over 2,000 square metres of amenities including a concierge service, an open plan lobby seamlessly connecting the indoor and outdoor spaces, swimming pools, fully-equipped gymnasium, residents' lounge and dining as well as a yoga and sculpture garden.

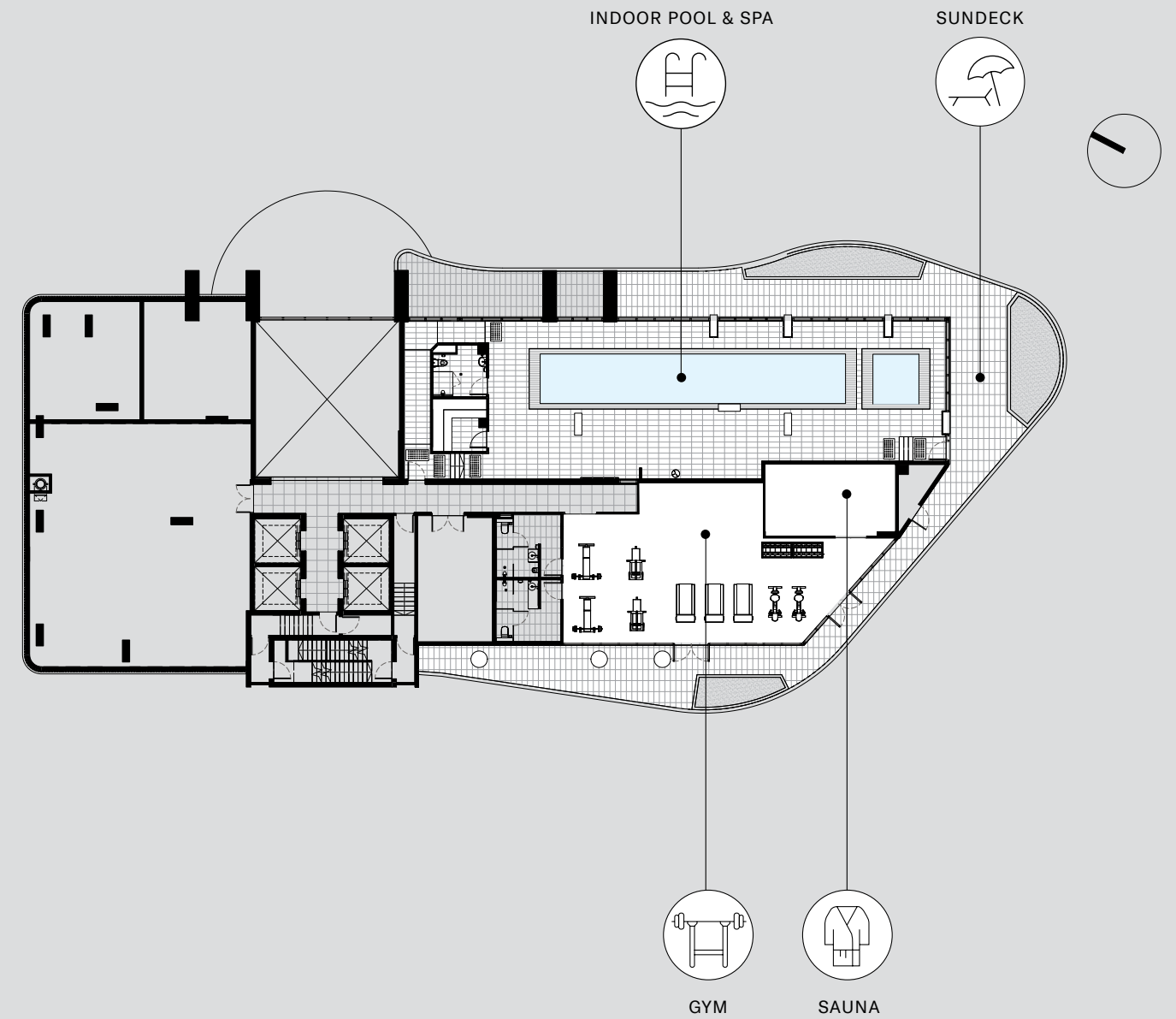
CLUB ONE AMENITIES

RESORT STYLE SERVICES LOCATED OVER TWO LEVELS

GROUND FLOOR



LEVEL 1



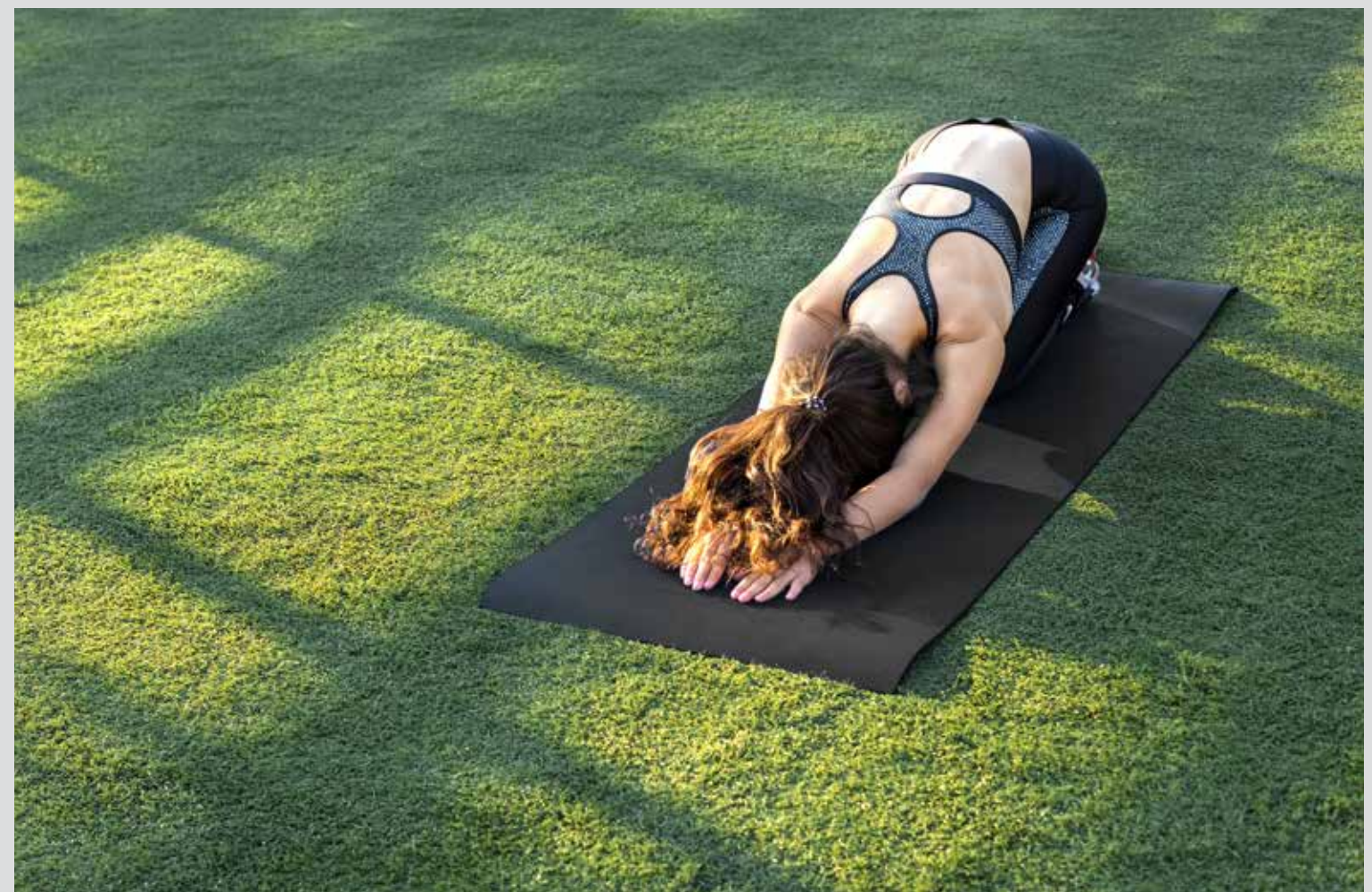




ARTIST IMPRESSION - INDOOR POOL



ARTIST IMPRESSION - POOL LOUNGE



CHEVRON ONE RESIDENCES

GOLD COAST

AN ICONIC TEAM

DEVELOPER

Bensons

Founded 25 years ago, Australian-owned developer, Bensons Property Group, operates under an important principle: the desire to create residences of distinction that enrich the community and the lives of residents. Stunning architecture, stylish interiors and a true emphasis on quality are the hallmarks of a Bensons property.

ARCHITECT

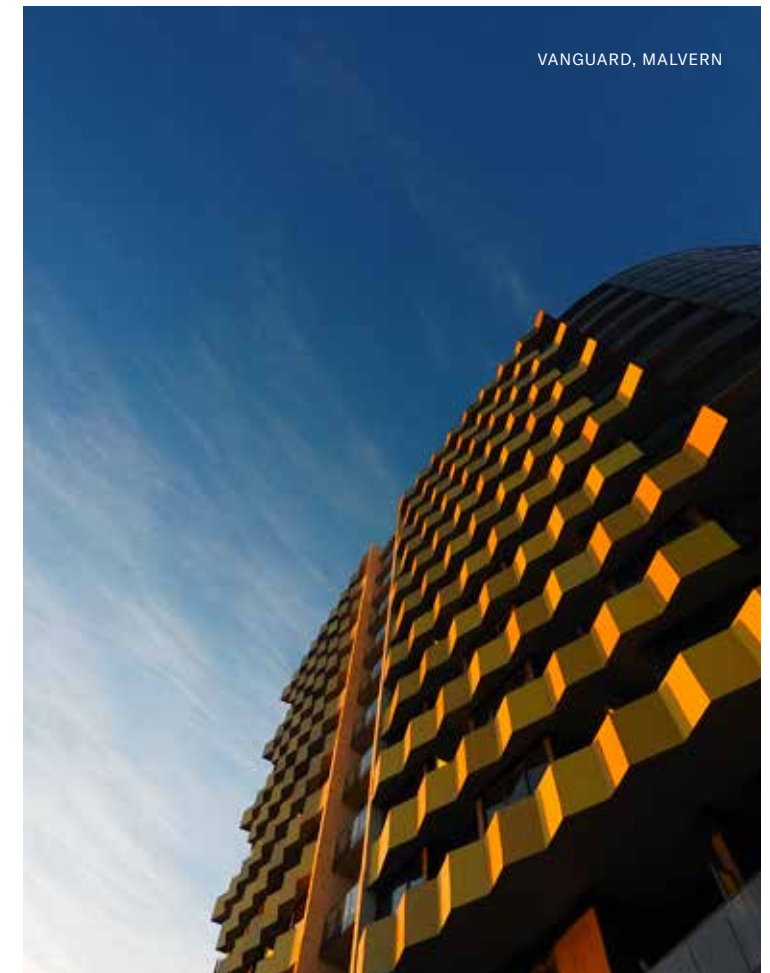
marchesepartners

Founded over 23 years ago, Marchese Partners has successfully conceived cutting-edge, mixed-use developments in Australia, New Zealand, Asia, the United States, and the United Kingdom. With the experience and expertise of a long-standing team, Marchese Partners are well-versed in delivering only the best design outcomes, including the world-famous and iconic Bondi Icebergs in Sydney, Australia.

APPOINTED BUILDER

ICON

Icon is a fully diversified construction services provider, offering complex construction capability across all sectors in Australia and New Zealand. Their capability and experience provides clients with specialist expertise, value-add solutions and high-quality outcomes..





BROUGHT TO YOU BY

Bensons