



REGAL

RESIDENCES

IMPERIAL SQUARE



AN EMPIRE FOR ALL

Introducing Imperial Square, a new and magnificent empire set to become the new cosmopolitan heart of the Gold Coast's CBD. This grand precinct will forever transform and elevate the bustling suburb of Southport and become a world-class destination for the city, an icon for Queensland and the epitome of coastal living.

Set to be delivered across three stages, this development spans across a site of 13,420sqm and will consist of vertically-integrated commercial and accommodation complex, capturing Australia's second largest non-resource export sector, tourism.

Stage 1 Regal Residences combines the unique opportunity of 145 luxury residential apartments and 2 penthouses with a world-renowned Hotel group, while Stages 2 and 3 will consist of a

six-level podium structure including 40,000sqm of gross floor area (GFA), currently planned and designed for associated amenities including cafes, restaurants, retail and commercial.

When completed, Imperial Square's Stage Two tower will rise above all others and stand as one of the tallest towers in Australia and the Southern Hemisphere.

This empire is a destination that will offer future owners and investors a slice of the prosperous life.

This is your exclusive invitation to be a part of a development where you can live like royalty, dine like a king, build your business empire and be part of a majestic precinct that will reign for generations to come.



ROYAL LIVING LIKE NO OTHER

THIS IS AN ADDRESS THAT COMMANDS
ATTENTION. ONE THAT PLACES YOU AT
THE CENTRE OF IT ALL. WITH SPACIOUS
1, 2 & 3 BEDROOM APARTMENTS ALONGSIDE
TWO EXCLUSIVE 4-BEDROOM PENTHOUSES,
ALL SET WITHIN ONE OF THE WORLD'S
LARGEST AND MOST RECOGNISED HOTELS.

REGAL RESIDENCES INVITE FUTURE
RESIDENTS TO MAKE THEMSELVES AT HOME
WITHIN THEIR PERSONAL PALACE.









Each apartment features European style flooring paired with soft carpet to create distinction between spaces. Only the finest materials, appliances and fitouts are selected to fill every corner of your refined residence.



GRAND LIVING WITH CENTRAL CONVENIENCE

RESTAURANTS

- 1 Sushi Train Southport
- 2 Hungry Jack's Southport
- 3 McDonald's Southport
- 4 GOTO Japanese Restaurant
- 5 The Cardamon Pod
- 6 Roma Pizzeria
- 7 Mr. Thai Restaurant
- 8 De Vito Waterfront

RETAIL

- 9 Marina Mirage
- 10 Australia Fair Shopping Centre
- 11 Brickworks
- 12 Paradise Centre
- 13 Pacific Fair Shopping Centre

CULTURE

- 14 The Star Gold Coast
- 15 Chinatown
- 16 Southport Surf Life Saving Club
- 17 Surfers Paradise Beach

EDUCATION

- 18 Griffith University
- 19 Griffith College
- 20 Southport State High School
- 21 Southport State School
- 22 The Southport School
- 23 Tafe Qld Southport
- 24 Bond University

MARINAS

- 25 Mariner's Cove Marina
- 26 Bayview Harbour

MARINAS

- 27 Gold Coast City Marina & Shipyard
- 28 Hope Harbour Marina
- 29 Runaway Bay Marina

HEALTH

- 30 Gold Coast University Hospital
- 31 Gold Coast Private Hospital
- 32 Gold Coast Athletics Centre
- 33 Southport Health Precinct
- 34 Gold Coast Aquatic Centre







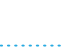
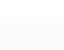
LANDMARKS

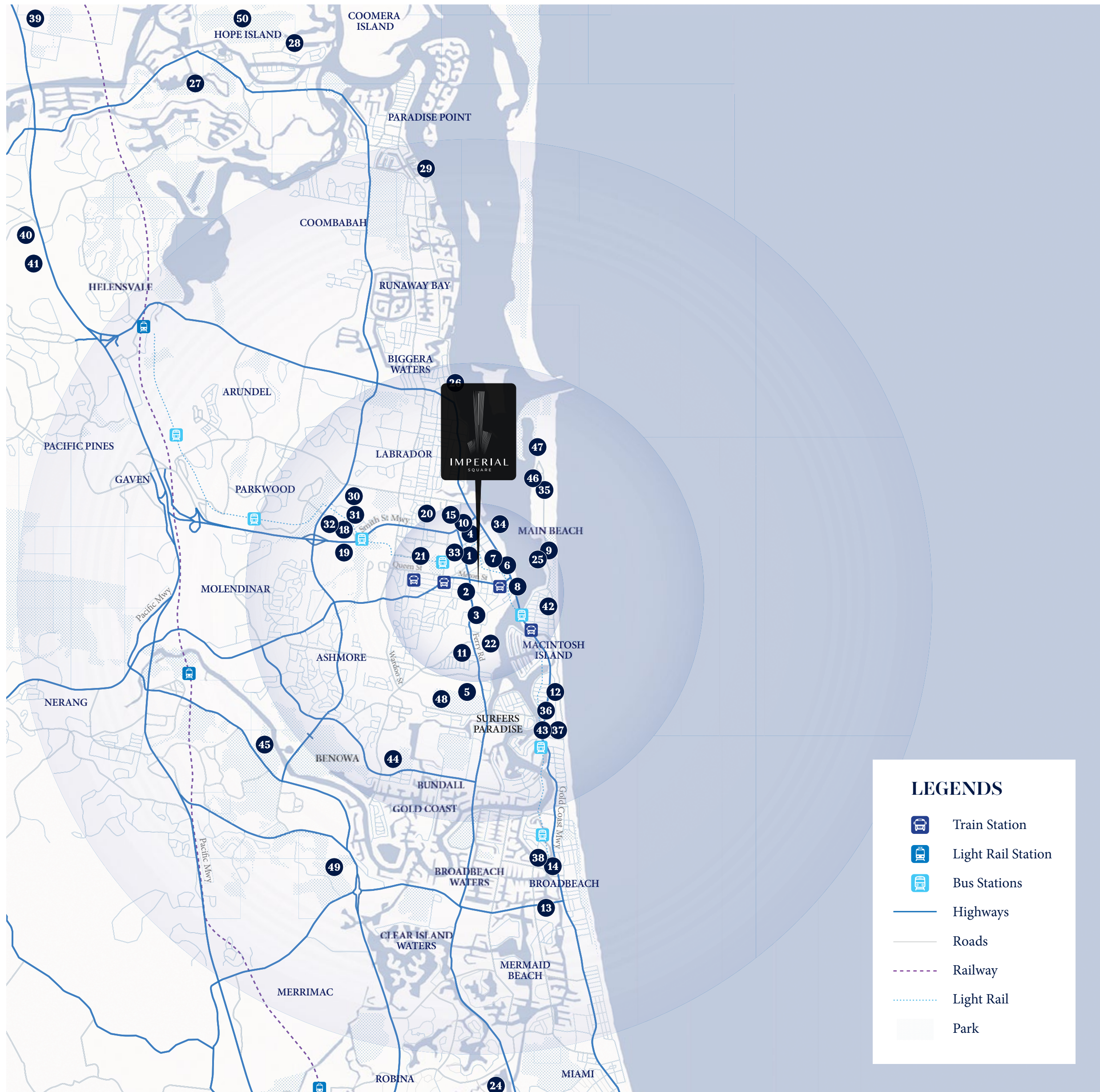
- 35 SeaWorld
- 36 Holey Moley Putt Putt
- 37 iFly Indoor Skydiving
- 38 Gold Coast Convention and Exhibition Centre
- 39 Dreamworld
- 40 Warner Brothers Movie World
- 41 Wet 'n' Wild Gold Coast
- 42 Main Beach Tourist Park
- 43 Infinity Attraction

SPORTS

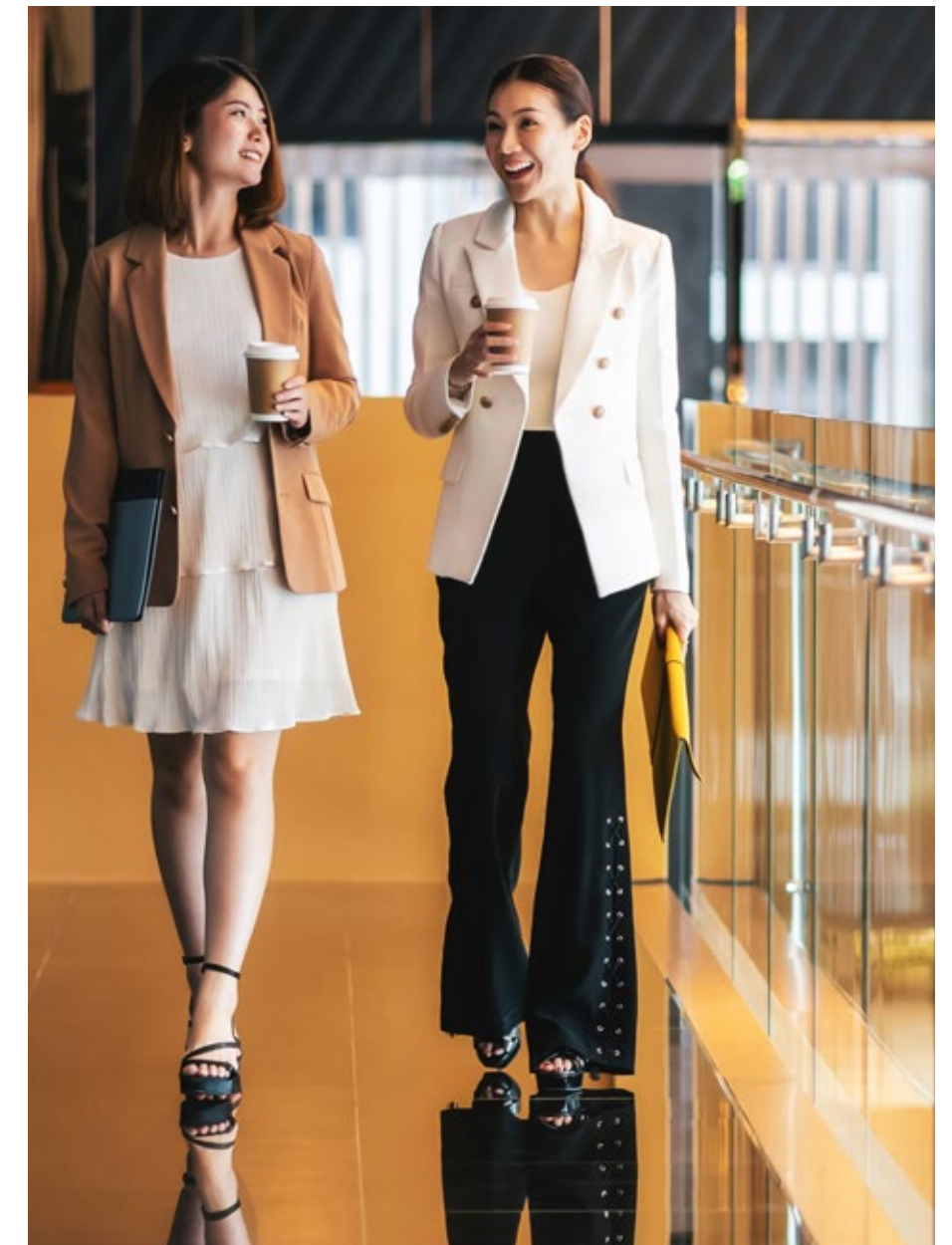
- 44 Southport Golf Club
- 45 Metricon Stadium
- 46 Jetpack & Flyboard Adventures
- 47 BK's Gold Coast Fishing Charters
- 48 Southport Golf Club
- 49 Palm Meadows Golf Course
- 50 Sanctuary Cove Golf Course and Country Club

LEGENDS

-  Train Station
-  Light Rail Station
-  Bus Stations
-  Highways
-  Roads
-  Railway
-  Light Rail
-  Park



IMPRESSIVELY CONNECTED TO ALL



Experience effortless access to an endless array of local amenities, services and entertainment right at your doorstep.

From soft, sandy beaches to lush parklands, refined restaurants and cafes to boutique waterfront shopping, it's all a short stroll from your new home. You'll also be moments away from local health services, recreation facilities, supermarkets and transport options. At Regal Residences, ease is more than just an advantage, it is a way of life.



HOTELESQUE PRIVILEGE AT AN EXCLUSIVE ADDRESS

Combining the exceptional offerings of a world-renowned hotel with stunning apartments, residents at Regal Residences will have access to a life of pure leisure and luxury.

Expect a grand welcome at the foyer and bar, designed to set the stage and warmly invite both, residents and hotel guests. **Indulge in exclusive, residents-only premium facilities including valet, concierge, Resident's Lounge, sauna, steam room, gym plus a rooftop infinity pool and outdoor dining setting where you can relax and soak in the surrounding views.**



Indicative only



AN ENVIABLE LIFESTYLE AWAITS



Indicative only



Indicative only

At Regal Residences, future residents can expect royal treatment that's elevated above all others.

Experience a grand welcome at the hotel's foyer and bar, escape for a staycation whenever you please or spoil a loved one with dinner at the hotel's restaurant - it's all yours to explore and enjoy, without having to leave home.

ENRICHING YOUR LIVING ENVIRONMENT & EXPERIENCE

At Regal Residences, we aim to bring you a better way of living that is innovative, forward-looking and one that improves your quality of life. This is why we've built our residence with smart technology that you will have access to with the Imperial Club Residents App.

This app is a fully-integrated ecosystem that is compatible with all smart phones. It will enable you to be part of a new, smart urban community with unparalleled standards of sustainability and safety.



Book Facilities



Book Personal Services



Drop off & Parcel Collection



Apartment Manual



Report & Request



Events & Community Noticeboard



Document Storage & Sharing



Local Amenities

Smart building and app features include:

- State-of-the-art seamless connection
- User-friendly intercoms
- Contactless access to the building and lifts
- Highly secure alarm integration allowing mobile entry to common and lift areas
- Common Area Access
- Voice Activation
- Handsfree usage
- "Groundfloor" Parcel Lockers with contactless delivery and pick-up as well as instant notification of delivery.
- QR codes engine
- Facial Recognition
- E-Wallet

This will enable residents to seamlessly:

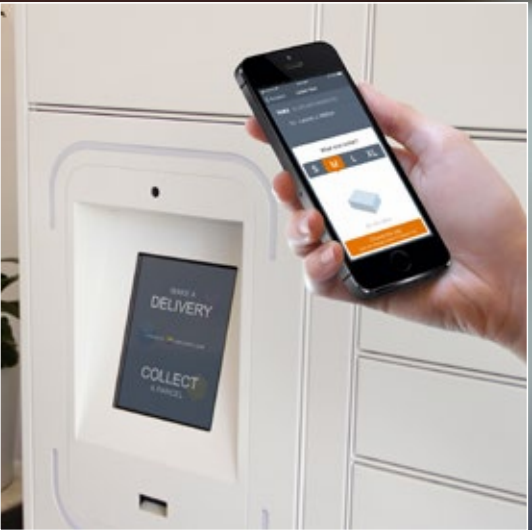
- Book facilities
- Drop off & collect parcels
- Report issues and request services
- Book personal services
- Access the apartment manual
- Learn about events and be part of community noticeboard
- Gain access to promotions & special deals
- Learn about local amenities
- Monitor utility usage

*Conditions apply

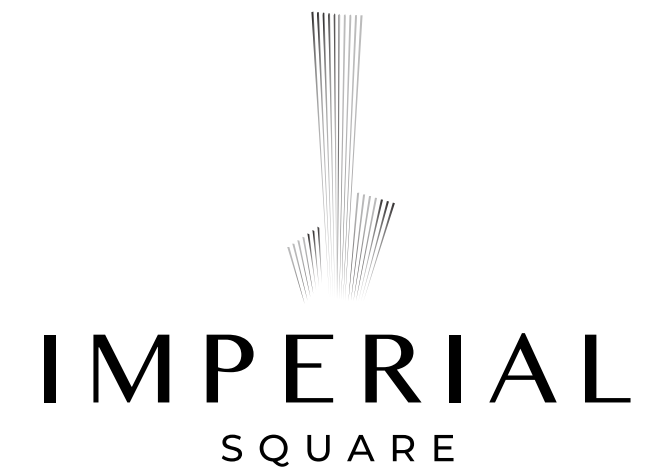
Powered By  wumbo

IMPERIAL SQUARE

IMPERIAL CLUB RESIDENTS APP



AN EXCLUSIVE MEMBERSHIP



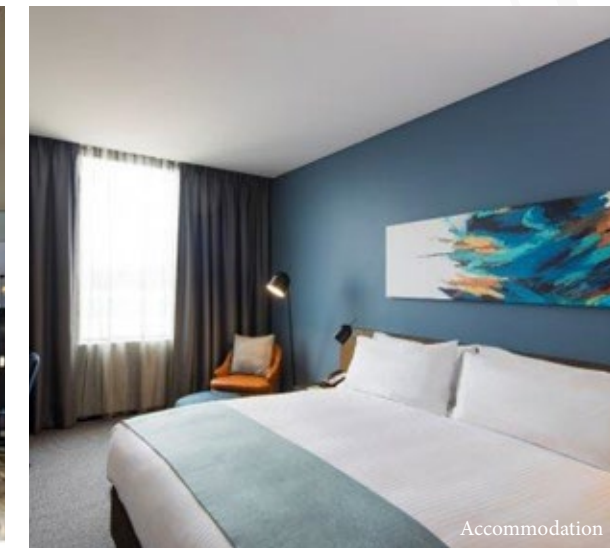
Exclusive Imperial Club



Valet



Restaurant



Accommodation



Entertainment



Merchandise



Merchandise



Southport Yacht Club



IMPERIAL SQUARE

When you become a resident at Regal Residences, you are immediately a part of The Imperial Club, offering residents-only privileges.

Dining

Dinner for two on your birthday with food and beverage discounted at all restaurants and bars throughout the hotel.

Valet

Limited to 7/week, drop-off only.

Complimentary accommodation

1 week* / year for 5 years *subject to availability.

Merchandise

Complimentary Regal Residences bathroom set for 2 including exclusive robe & slippers.

Entertainment

TBA

Yearly Membership at Southport Yacht Club

For 1 person and guests, with discount on food and beverages at the club.

Yearly Membership at Southport Surf Club

For 2 persons, with discount on food and beverages at the club.

*Conditions apply

ROOFTOP TERRACE



RESIDENTS LOUNGE





UNIT 01

3 - BEDROOM APARTMENT

Internal 108m²
Balcony 14m²
Total 122m²

 3 Bedroom
 2 Bathroom

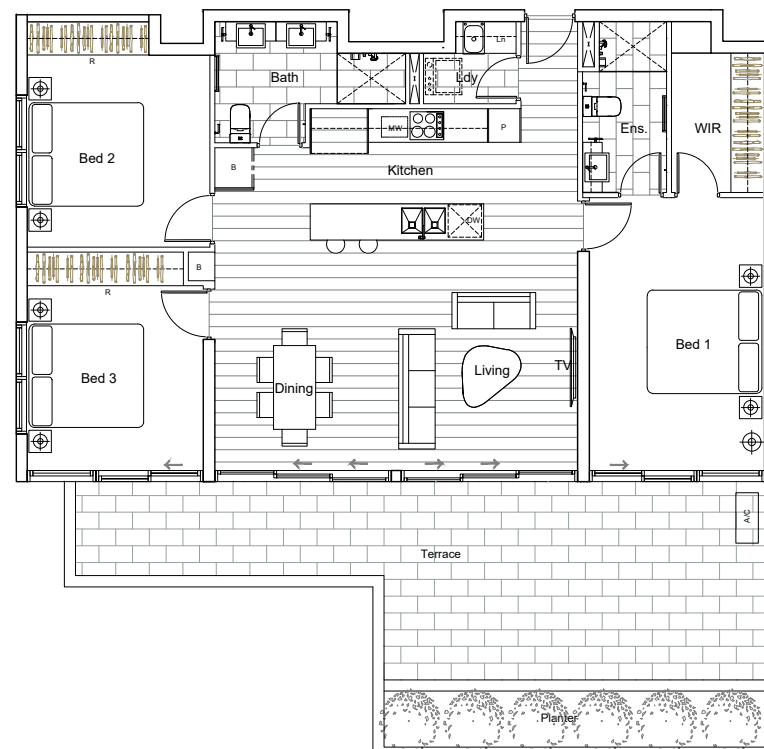


UNIT P01

3 - BEDROOM APARTMENT

Internal 108m²
Balcony 45m²
Total 153m²

 3 Bedroom
 2 Bathroom

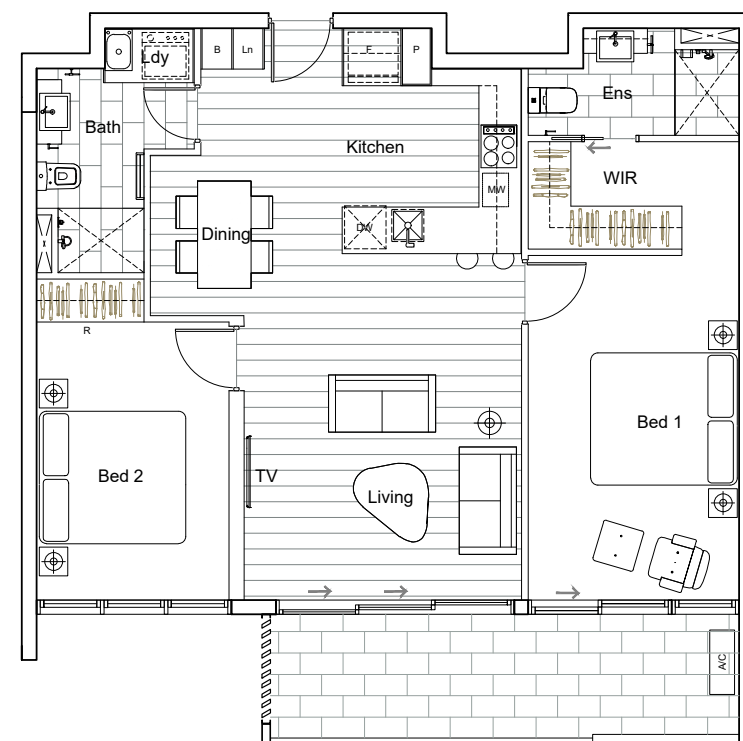


UNIT 02

2 - BEDROOM APARTMENT

Internal 81m²
Balcony 13m²
Total 94m²

 2 Bedroom
 2 Bathroom




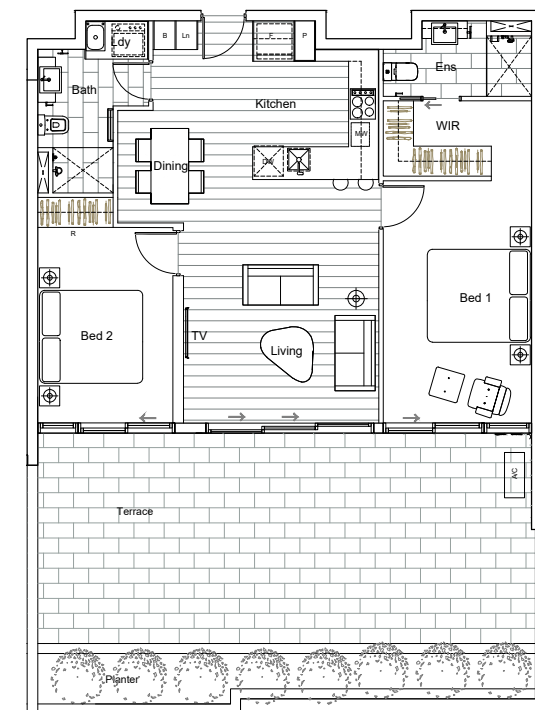
Disclaimer: The information provided is illustrative only and may not be relied upon. In particular, the final area dimensions of any apartment sold will be determined by the contract of sale and may differ from the depicted. Whilst every effort is made to provide accurate and complete information, the developer does not warrant or represent that the information in this floor plan is free from errors or omissions or is suitable for you intended use. Subject by any terms implied by law which cannot be excluded, the developer accepts no responsibility for any loss, damage, cost or expense (whether direct or indirect) by you as a result of any error, omission or misrepresentation in information. All information is subject to change without notice. All rights reserved.

UNIT P02

2 - BEDROOM APARTMENT

Internal 81m²
Balcony 53m²
Total 136m²

 2 Bedroom
 2 Bathroom



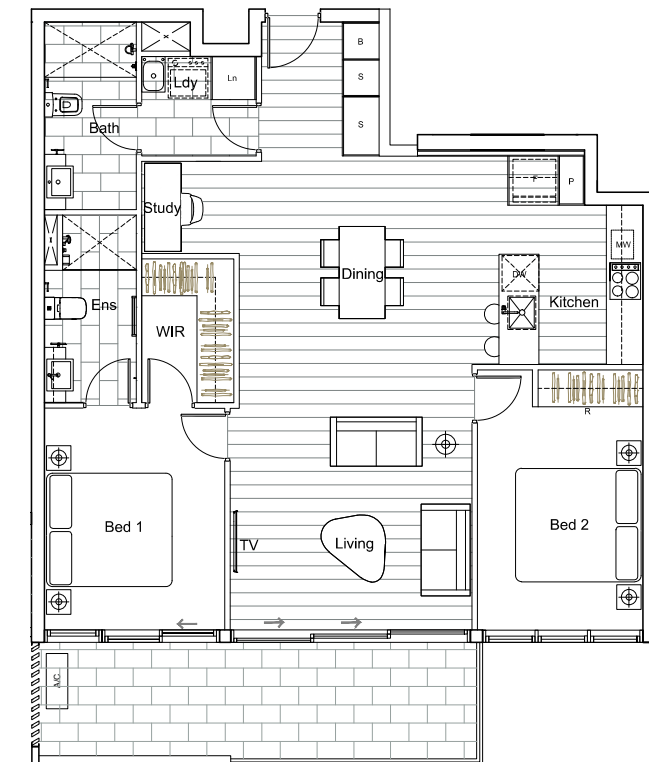
 R E G A L
RESIDENCES

UNIT 03

2 - BEDROOM APARTMENT

Internal 91m²
Balcony 15m²
Total 106m²

 2 Bedroom
 2 Bathroom

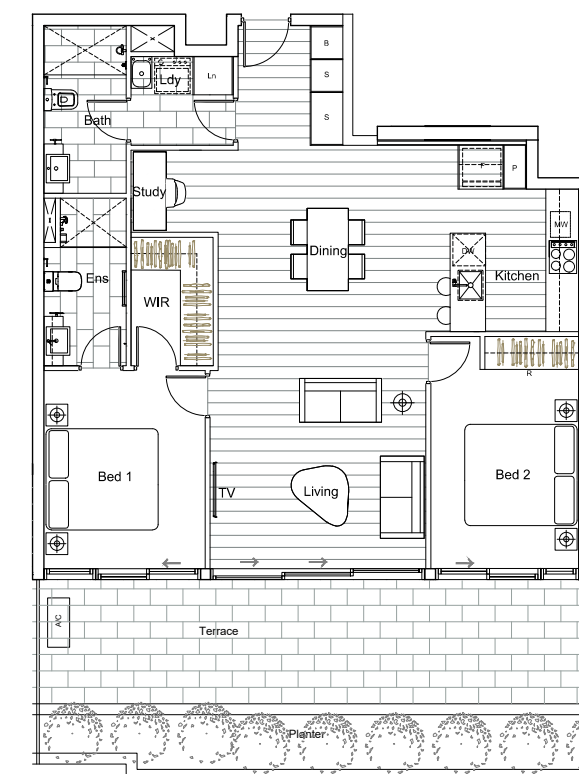


UNIT P03

2 - BEDROOM APARTMENT

Internal 91m²
Balcony 37m²
Total 128m²

 2 Bedroom
 2 Bathroom



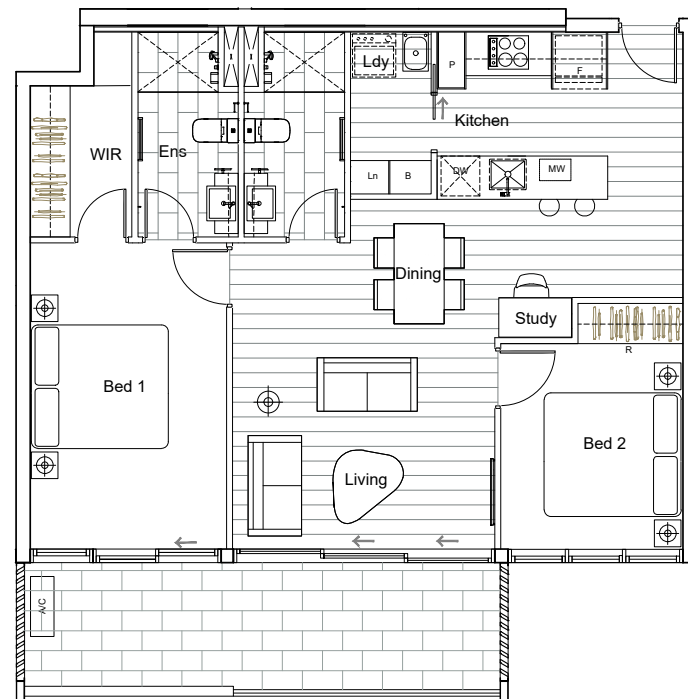
Disclaimer: The information provided is illustrative only and may not be relied upon. In particular, the final area dimensions of any apartment sold will be determined by the contract of sale and may differ from the depicted. Whilst every effort is made to provide accurate and complete information, the developer does not warrant or represent that the information in this floor plan is free from errors or omissions or is suitable for you intended use. Subject by any terms implied by law which cannot be excluded, the developer accepts no responsibility for any loss, damage, cost or expense (whether direct or indirect) by you as a result of any error, omission or misrepresentation in information. All information is subject to change without notice. All rights reserved.

UNIT 04

2 - BEDROOM APARTMENT

Internal 79m²
Balcony 15m²
Total 94m²

2 Bedroom
2 Bathroom

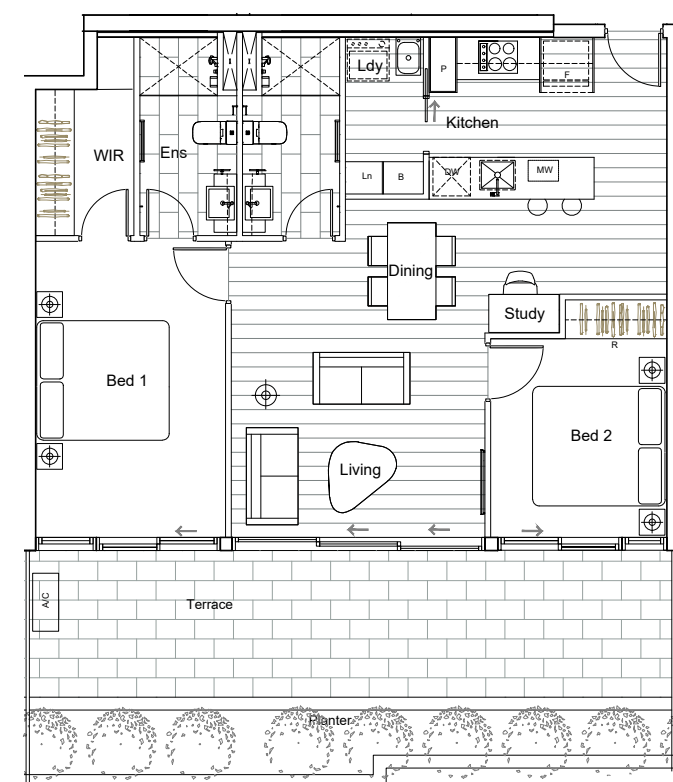


UNIT P04

2 - BEDROOM APARTMENT

Internal 79m²
Balcony 36m²
Total 115m²

2 Bedroom
2 Bathroom

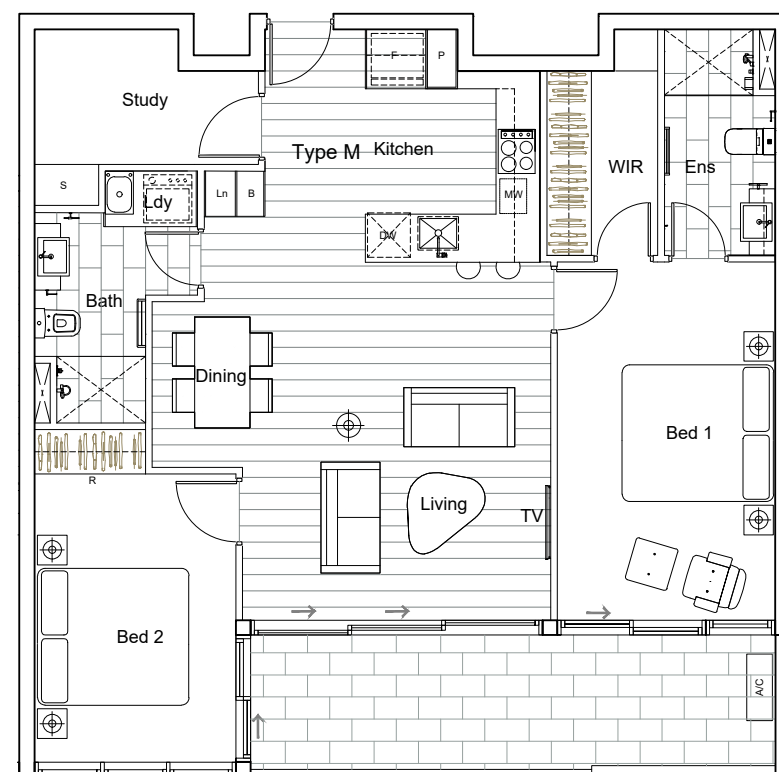


UNIT 05

2 - BEDROOM APARTMENT

Internal 88m²
Balcony 14m²
Total 102m²

2 Bedroom
2 Bathroom



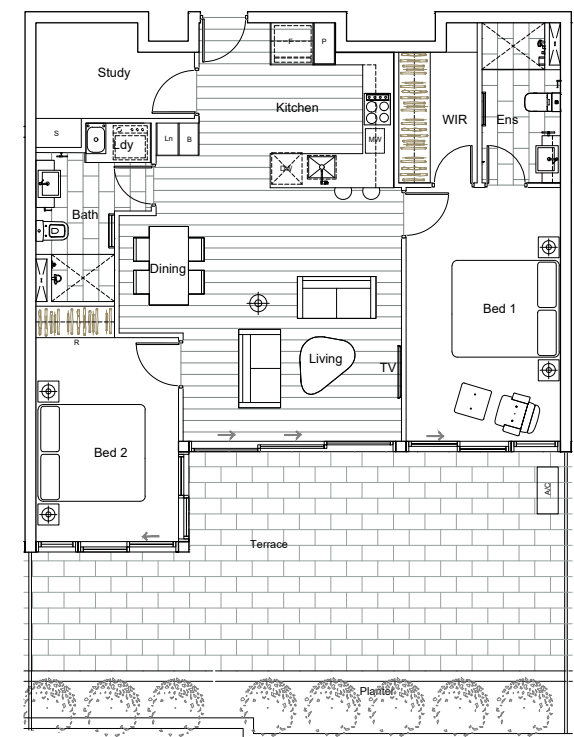
Disclaimer: The information provided is illustrative only and may not be relied upon. In particular, the final area dimensions of any apartment sold will be determined by the contract of sale and may differ from the depicted. Whilst every effort is made to provide accurate and complete information, the developer does not warrant or represent that the information in this floor plan is free from errors or omissions or is suitable for you intended use. Subject by any terms implied by law which cannot be excluded, the developer accepts no responsibility for any loss, damage, cost or expense (whether direct or indirect) by you as a result of any error, omission or misrepresentation in information. All information is subject to change without notice. All rights reserved.

UNIT P05

2 - BEDROOM APARTMENT

Internal 88m²
Balcony 51m²
Total 139m²

2 Bedroom
2 Bathroom

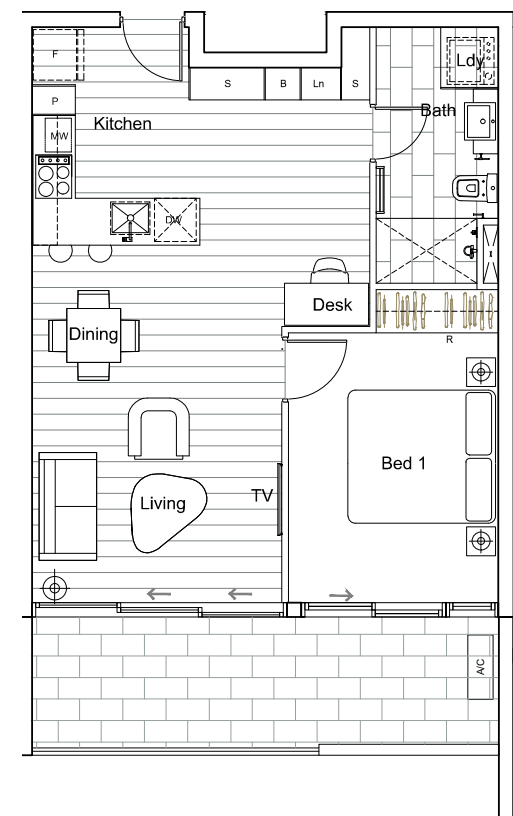


UNIT 06

1 - BEDROOM APARTMENT

Internal 54m²
Balcony 13m²
Total 67m²

1 Bedroom
1 Bathroom



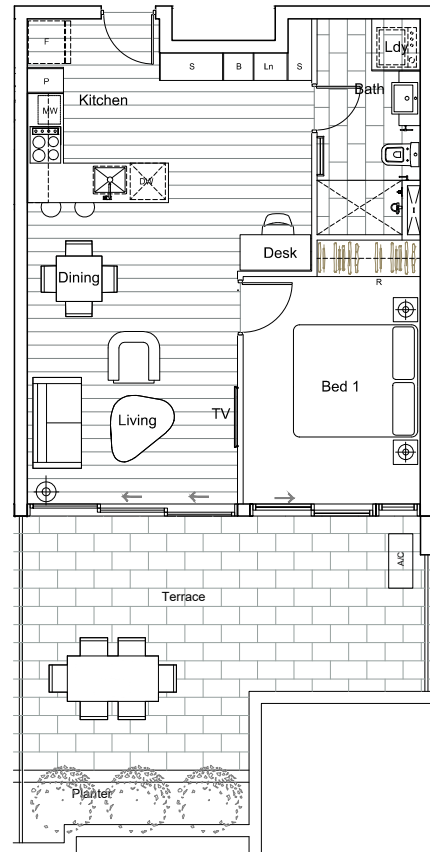
Disclaimer: The information provided is illustrative only and may not be relied upon. In particular, the final area dimensions of any apartment sold will be determined by the contract of sale and may differ from the depicted. Whilst every effort is made to provide accurate and complete information, the developer does not warrant or represent that the information in this floor plan is free from errors or omissions or is suitable for you intended use. Subject by any terms implied by law which cannot be excluded, the developer accepts no responsibility for any loss, damage, cost or expense (whether direct or indirect) by you as a result of any error, omission or misrepresentation in information. All information is subject to change without notice. All rights reserved.

UNIT P06

1 - BEDROOM APARTMENT

Internal 54m²
Balcony 28m²
Total 82m²

 1 Bedroom
 1 Bathroom

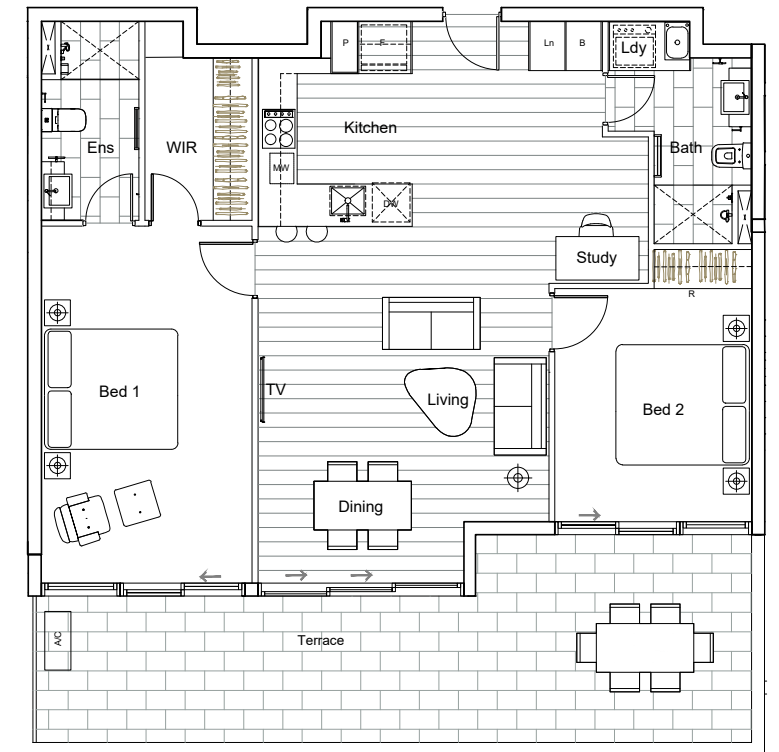


UNIT P07

2 - BEDROOM APARTMENT

Internal 92m²
Balcony 31m²
Total 123m²

 2 Bedroom
 2 Bathroom

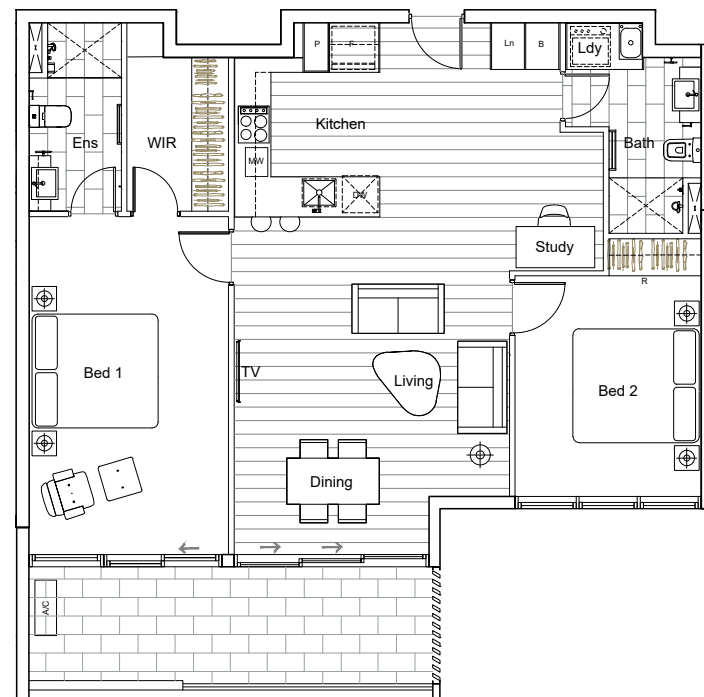


UNIT 07

2 - BEDROOM APARTMENT

Internal 92m²
Balcony 14m²
Total 106m²


 2 Bedroom
 2 Bathroom

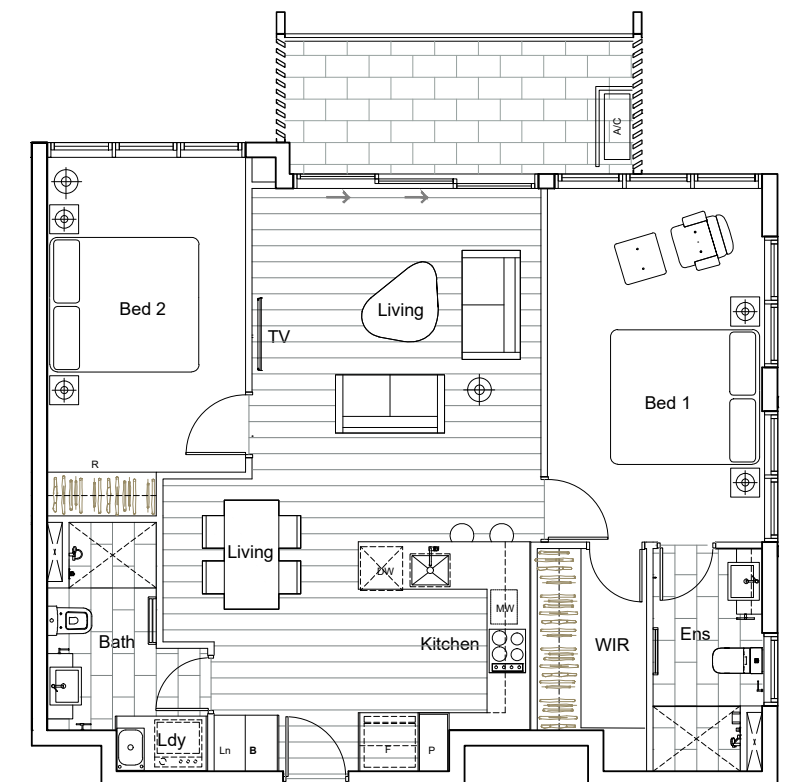


UNIT 08

2 - BEDROOM APARTMENT

Internal 82m²
Balcony 10m²
Total 92m²

 2 Bedroom
 2 Bathroom



Disclaimer: The information provided is illustrative only and may not be relied upon. In particular, the final area dimensions of any apartment sold will be determined by the contract of sale and may differ from the depicted. Whilst every effort is made to provide accurate and complete information, the developer does not warrant or represent that the information in this floor plan is free from errors or omissions or is suitable for you intended use. Subject by any terms implied by law which cannot be excluded, the developer accepts no responsibility for any loss, damage, cost or expense (whether direct or indirect) by you as a result of any error, omission or misrepresentation in information. All information is subject to change without notice. All rights reserved.



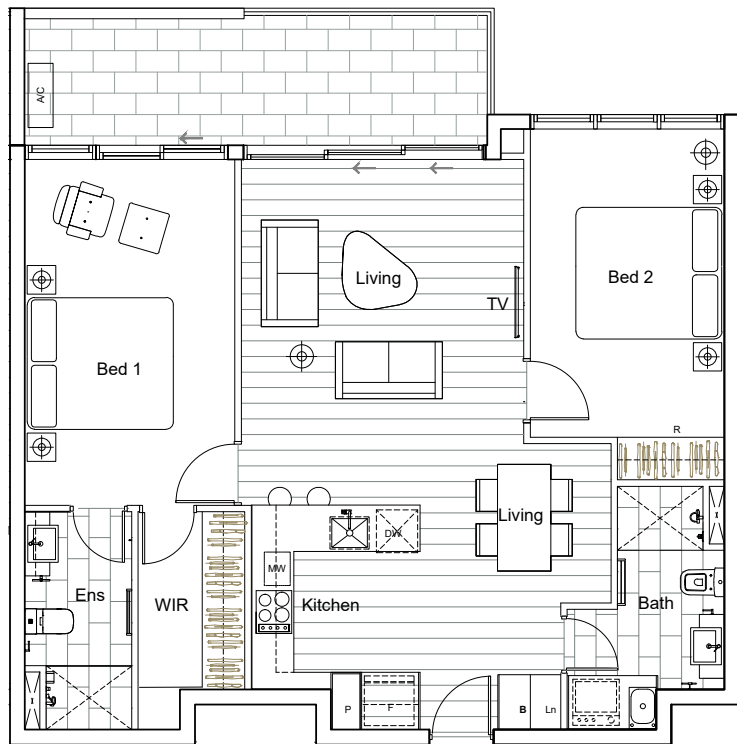
Disclaimer: The information provided is illustrative only and may not be relied upon. In particular, the final area dimensions of any apartment sold will be determined by the contract of sale and may differ from the depicted. Whilst every effort is made to provide accurate and complete information, the developer does not warrant or represent that the information in this floor plan is free from errors or omissions or is suitable for you intended use. Subject by any terms implied by law which cannot be excluded, the developer accepts no responsibility for any loss, damage, cost or expense (whether direct or indirect) by you as a result of any error, omission or misrepresentation in information. All information is subject to change without notice. All rights reserved.

UNIT 09

2 - BEDROOM APARTMENT

Internal 82m²
Balcony 13m²
Total 95m²

- 2 Bedroom
- 2 Bathroom

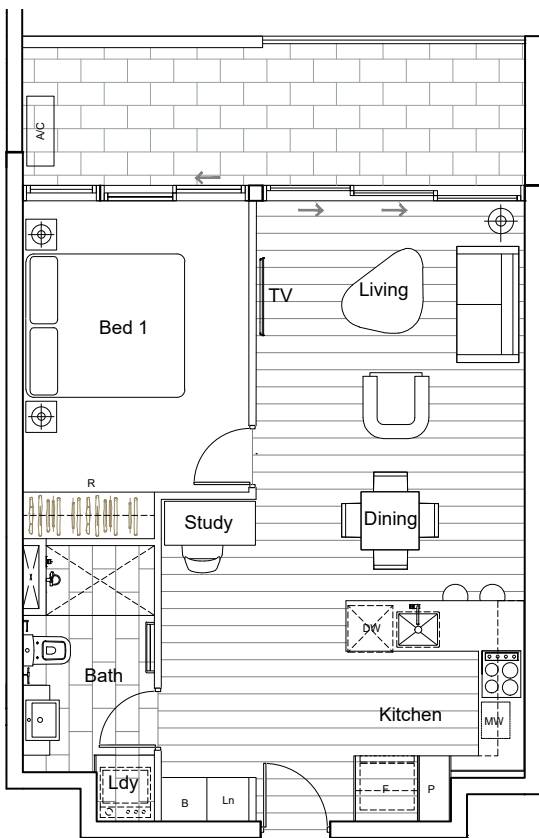


UNIT 10

1 - BEDROOM APARTMENT

Internal 54m²
Balcony 13m²
Total 67m²

- 1 Bedroom
- 1 Bathroom



Disclaimer: The information provided is illustrative only and may not be relied upon. In particular, the final area dimensions of any apartment sold will be determined by the contract of sale and may differ from the depicted. Whilst every effort is made to provide accurate and complete information, the developer does not warrant or represent that the information in this floor plan is free from errors or omissions or is suitable for you intended use. Subject by any terms implied by law which cannot be excluded, the developer accepts no responsibility for any loss, damage, cost or expense (whether direct or indirect) by you as a result of any error, omission or misrepresentation in information. All information is subject to change without notice. All rights reserved.

UNIT 11

1 - BEDROOM APARTMENT

Internal 50m²
Balcony 7m²
Total 57m²

- 1 Bedroom
- 1 Bathroom

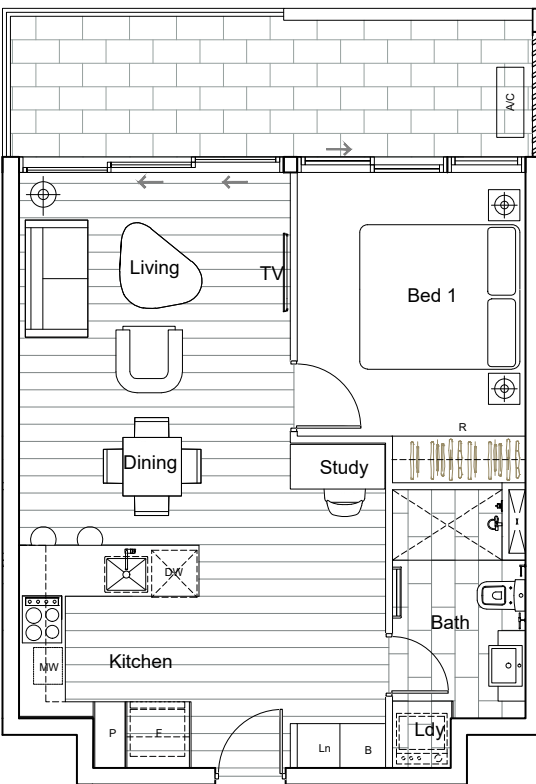


UNIT 12

1 - BEDROOM APARTMENT

Internal 51m²
Balcony 13m²
Total 64m²

- 1 Bedroom
- 1 Bathroom



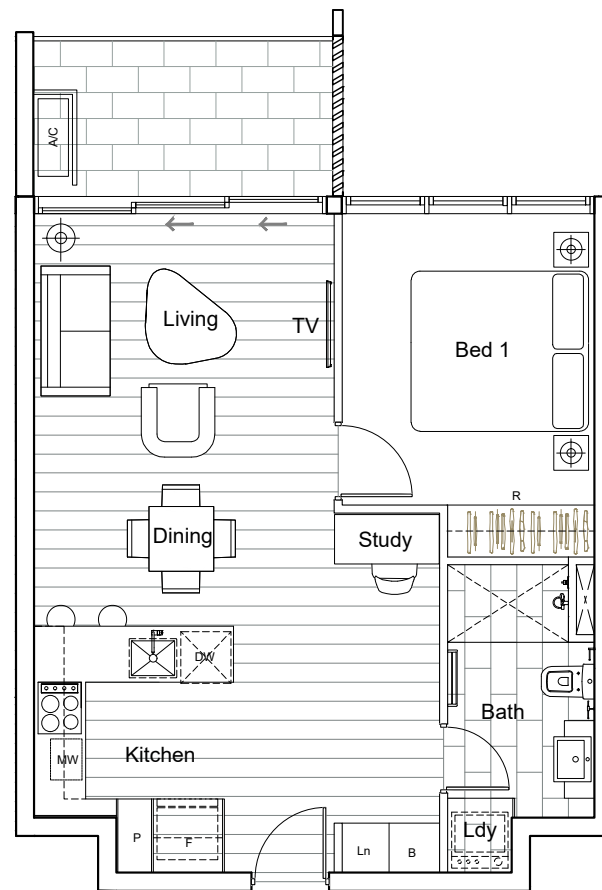
Disclaimer: The information provided is illustrative only and may not be relied upon. In particular, the final area dimensions of any apartment sold will be determined by the contract of sale and may differ from the depicted. Whilst every effort is made to provide accurate and complete information, the developer does not warrant or represent that the information in this floor plan is free from errors or omissions or is suitable for you intended use. Subject by any terms implied by law which cannot be excluded, the developer accepts no responsibility for any loss, damage, cost or expense (whether direct or indirect) by you as a result of any error, omission or misrepresentation in information. All information is subject to change without notice. All rights reserved.

UNIT 13

1 - BEDROOM APARTMENT

Internal 51m²
Balcony 7m²
Total 58m²

 1 Bedroom
 1 Bathroom

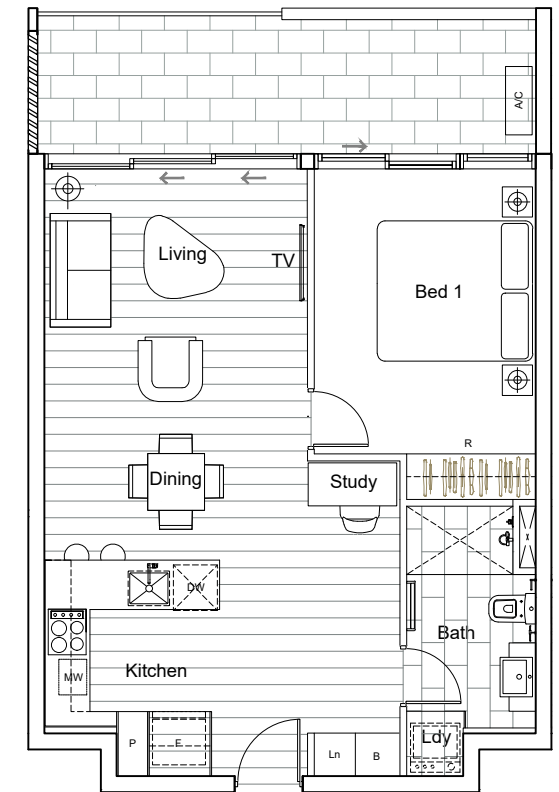


UNIT 15

1 - BEDROOM APARTMENT

Internal 54m²
Balcony 13m²
Total 67m²

 1 Bedroom
 1 Bathroom

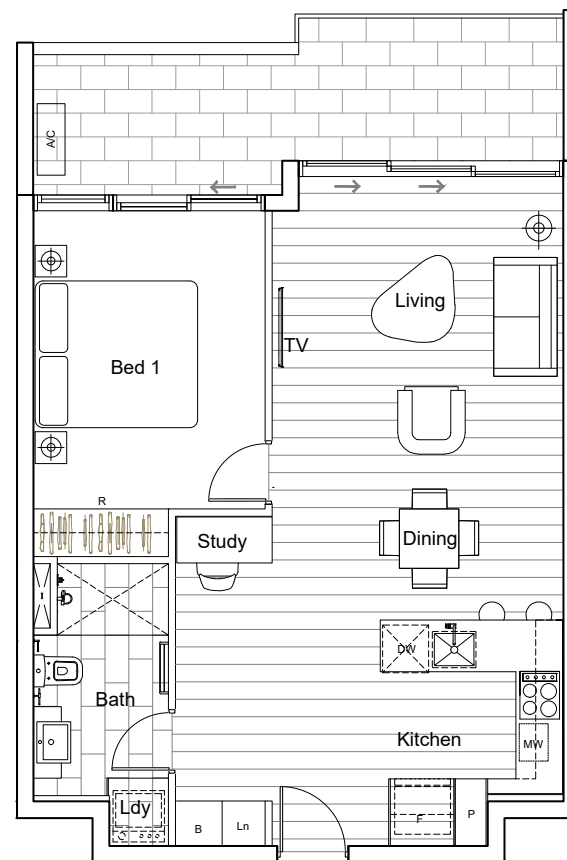


UNIT 14

1 - BEDROOM APARTMENT

Internal 57m²
Balcony 13m²
Total 70m²


 1 Bedroom
 1 Bathroom

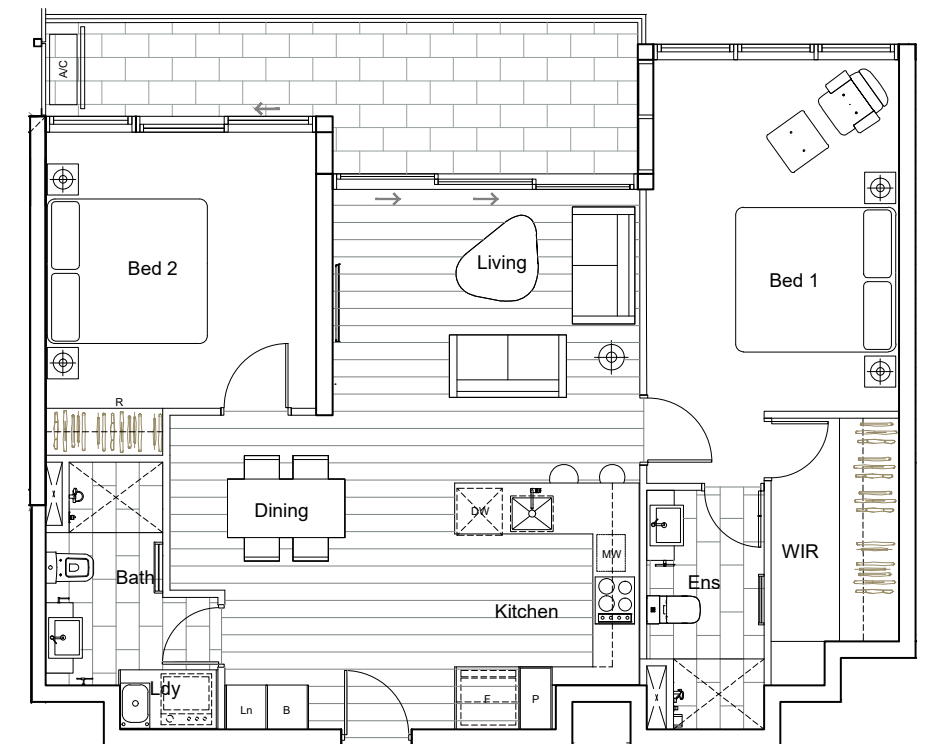


UNIT 16

2 - BEDROOM APARTMENT

Internal 85m²
Balcony 13m²
Total 98m²

 2 Bedroom
 2 Bathroom



Disclaimer: The information provided is illustrative only and may not be relied upon. In particular, the final area dimensions of any apartment sold will be determined by the contract of sale and may differ from the depicted. Whilst every effort is made to provide accurate and complete information, the developer does not warrant or represent that the information in this floor plan is free from errors or omissions or is suitable for you intended use. Subject by any terms implied by law which cannot be excluded, the developer accepts no responsibility for any loss, damage, cost or expense (whether direct or indirect) by you as a result of any error, omission or misrepresentation in information. All information is subject to change without notice. All rights reserved.



Disclaimer: The information provided is illustrative only and may not be relied upon. In particular, the final area dimensions of any apartment sold will be determined by the contract of sale and may differ from the depicted. Whilst every effort is made to provide accurate and complete information, the developer does not warrant or represent that the information in this floor plan is free from errors or omissions or is suitable for you intended use. Subject by any terms implied by law which cannot be excluded, the developer accepts no responsibility for any loss, damage, cost or expense (whether direct or indirect) by you as a result of any error, omission or misrepresentation in information. All information is subject to change without notice. All rights reserved.

BUILDING YOUR EMPIRE

Imperial Square and Regal Residences are proudly brought to you by Azzura Investments Ltd (AIL).

Azzura Investments Ltd (AIL) is an Australian public company based in the dynamic and thriving city of Gold Coast. Established in 1989, Azzura is proud of its impressive legacy, celebrating over three decades of success in residential and commercial developments stretching from the northern Gold Coast of Queensland through to northern New South Wales.

With numerous awards for excellence in design, the Azzura team are proud of their role in the ongoing development of what has become Australia's premier holiday destination and lifestyle community.

With the presentation of projects such as the Wings Residential Resort, Palazzo Colonnades and Azzura Greens Residential Resort. Azzura is passionate about creating striking and revolutionary landmarks embraced by tourists and locals alike.

azzura™

IMPERIAL SQUARE



DEVELOPED BY

azzura[™]

1300 641 188

info@imperialsquare.com.au

59-73 Meron Street - Southport QLD 4215

imperialsquare.com.au

IMPERIAL SQUARE

Whilst all details have been carefully prepared, no warranty given either expressly or implied by the vendors or their agents in respect of the accuracy of the photographs, information and illustrations. Photographs, information and illustrations are indicative only for presentation purposes and are subject to change. They should not be relied upon as an accurate representation of the final product. Specification may change at any time.